

**Data-Sheet Trapeze-Rails**  
produced according to EN 60715

status: 03.2022

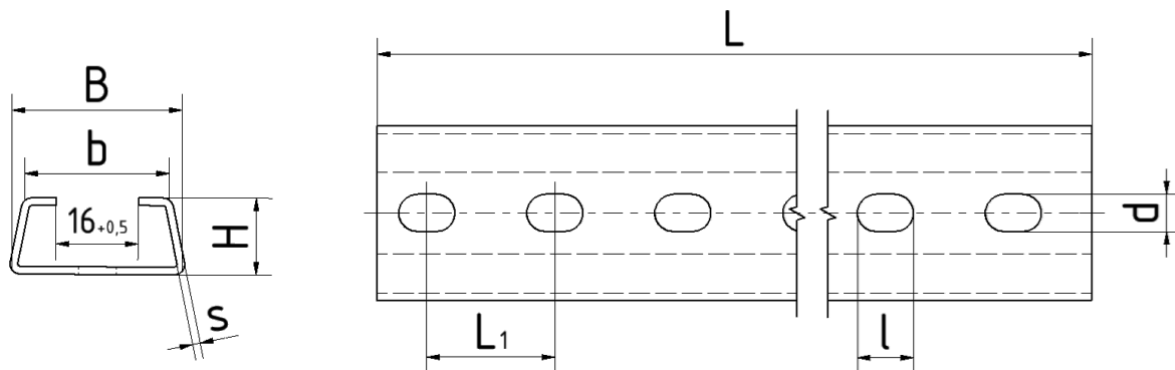
Trapeze-Rails are roll-forming manufactured from zinc-coated band steel. They can be used to accommodate appliances in control panel cabinets, distribution boxes and the like.

**Properties:**

Material: sheet steel zinc-plated 7...20 µm  
 Working Temperature: arbitrary  
 Delivery Length: 2000 mm  
 Comparable copper cross- section: at H=15 mm - 18 mm →  $A \approx 35 \text{ mm}^2$

For more information visit our homepage [www.licatec.de](http://www.licatec.de).

**Versions:**



Art.-No.	B	b	H	s	L	L1	l	d	m kg/100m	type of zinc-coating
7960 S-U	34	29	15	1,5	2000			without bores	80	zinc-plated
7960 F-U	34	29	15	1,5	2000			without bores	80	hot dip zinc-plated
7955 S-U	35	30	18	1,5	2000			without bores	89	zinc-plated
7950 S-U	35	30	18	2	2000			without bores	117	zinc-plated
7950 F-U	35	30	18	2	2000			without bores	117	hot dip zinc-plated
7960 S-G	34	29	15	1,5	2000	25	11	7,3	72	zinc-plated
7955 S-G	35	30	18	1,5	2000	25	11	7,3	79	zinc-plated
7950 S-G	35	30	18	2	2000	25	11	7,3	107	zinc-plated

Trapeze-Rails

**RoHS**  
konform