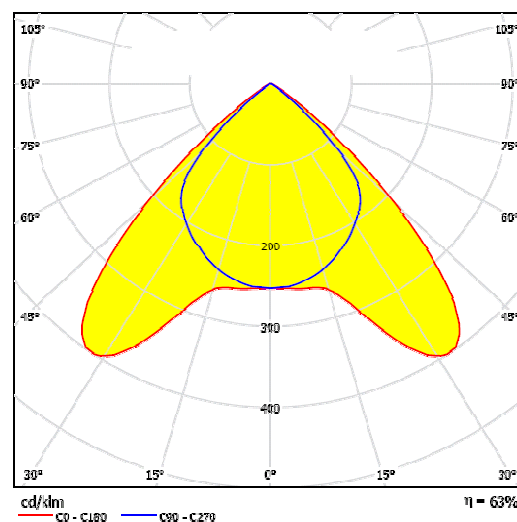
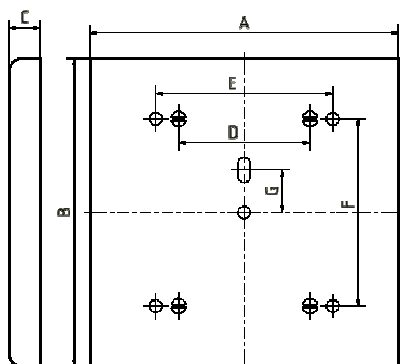
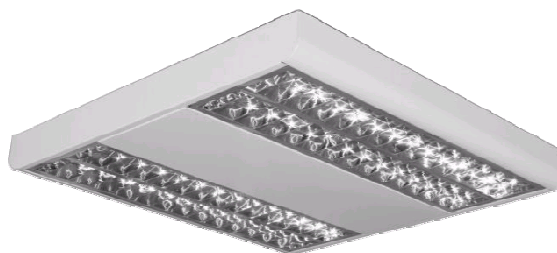



**Datenblatt Raster-Anbauleuchte Typ: LLY T5 / DPR HG**  
**Data-Sheet for Surface-Mounted Luminaire with Louvre**  
**Type: LLY T5 / DPR HG**

**Einzeleuchte T5 Doppelparabolraster, hochglänzend,**  
**Single Luminaire T5 double parabolic louvre, high-polished**

Stand: 04.2013

- Anbauleuchte für T5-Leuchtmittel
- Leuchtenkörper aus Stahlblech mit raumseitig gerundeten Kanten
- pulverbeschichtet ähnlich RAL 9003
- Doppelparabolraster, hochglänzend
- Surface-Mounted Luminaire for T5-lamps
- lamp housing made of sheet steel with rounded edges
- powder-coated similar to RAL 9003,
- double parabolic louvre, high-polished



Typ Type	Watt Watt	A A	B B	C C	D D	E E	F F	G G	Art.-Nr. Art.-No.	
<b>Leuchte mit EVG</b> Luminaire with electronic Ballast										
LLY T5/ DPR HG/ 414	4x14/24	610	610	65	300	350	370	84	3625400	Multi-Watt 3,4

   IP 20 SK I  $t_a$  25°C 230V 50-60 Hz